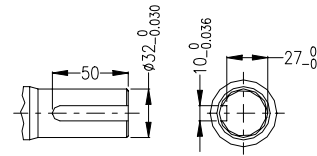
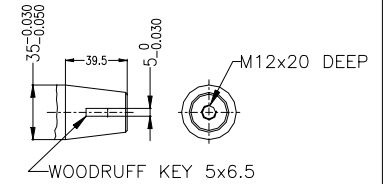


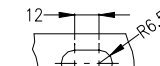
FOUNDATION PLAN



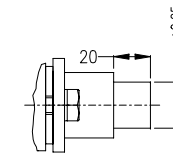
DETAIL 1  
STANDARD SHAFT



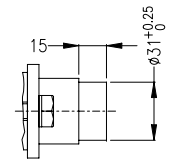
DETAIL 2  
TAPER SHAFT  
TAPER 1:4



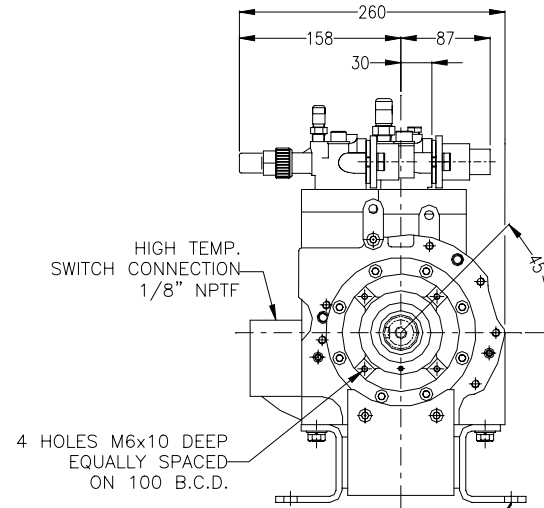
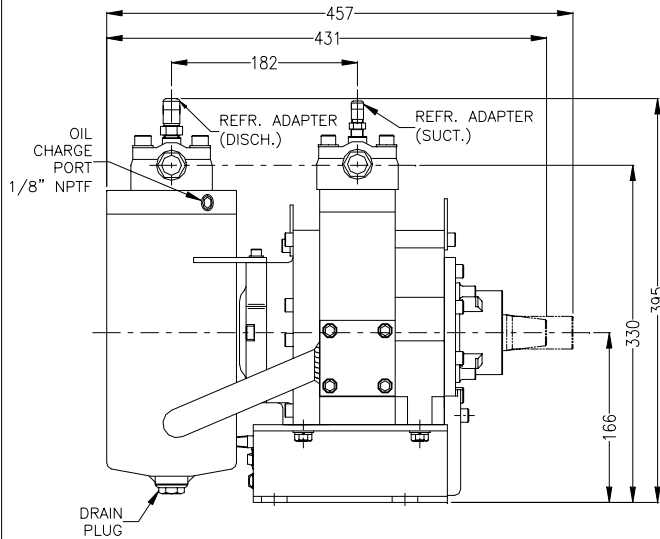
DETAIL C  
TYPICAL 4 PLACES



DISCH. PIPE DETAIL  
ø1-1/8" SWEAT CONNECTION



SUCT. PIPE DETAIL  
ø1-3/8" SWEAT CONNECTION



4 HOLES M6x10 DEEP  
EQUALLY SPACED  
ON 100 B.C.D.

SEE FOUNDATION PLAN

**SPECIFICATIONS:**

- WEIGHT: 58Kg. (127.8LB), DRY
- SWEPT VOLUME: 450cm<sup>3</sup> (27in<sup>3</sup>)
- RPM MIN: 800
- RPM MAX: 4000
- MAX SIDE LOAD: 1335N (300 lbs)
- ROTATION: CLOCKWISE (SHAFT END)
- SUCTION FITTING: ø1-3/8" SWEAT CONNECTION
- DISCHARGE FITTING: ø1-1/8" SWEAT CONNECTION

**NOTE:**

- COMPRESSOR SHIPPED WITH 1.03-1.38 BAR (15-20 PSI) NITROGEN.
- PLASTIC CAPS ARE PROVIDED FOR SUCTION AND DISCHARGE FITTINGS.

ITEM	QTY.	PART NO.	DESCRIPTION	MATERIAL
CHK'D: NJG			RT450 TRANSPORT COMPRESSOR ASSY.	DATE: FEB 05, 2001
DESIGNED: RN				SCALE: NTS SHEET: 1/3
				DWG. NO. REV.
				RT450AA A

REV.	DCR #	DATE	BY	CHK'D	DATE